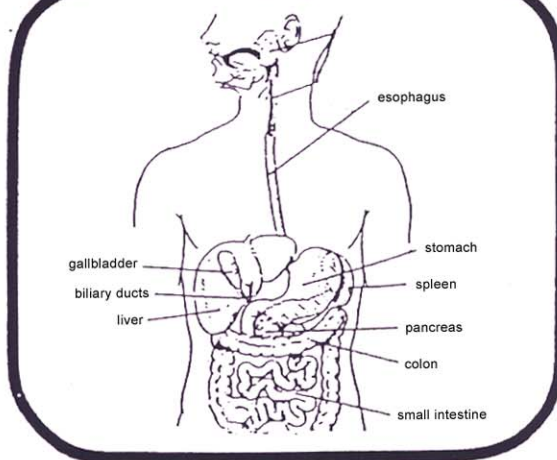


# GASTROINTESTINAL SERIES



The digestion of food begins in the mouth where it mixes with saliva. Further digestion takes place in the stomach as partially digested food, saliva and gastric juices are mixed. In the small intestine, digestion is completed and absorption begins.



Parts of the upper digestive tract include:  
esophagus  
stomach  
small intestine  
Accessory organs include:  
spleen  
pancreas  
colon  
gallbladder  
biliary ducts  
liver

## UPPER GI SERIES OR SMALL BOWEL SERIES

This exam consists of standing (if comfortable) and drinking fruit-flavored barium. The Radiologist watches the travel of the barium by remote control. Following initial x-rays, the x-ray table changes position. Again, the barium is observed and x-rays are made. You will be asked to turn from side to side to obtain different views of the stomach. The study requires one hour unless additional small bowel x-rays are requested. A small bowel series could take two hours or more, depending on how long it takes the barium to reach the large intestine.

### OUTPATIENTS:

Do not eat or drink after midnight the night before the exam. Do not eat breakfast on the day of the exam.

### INPATIENTS:

Your preparation is the responsibility of your nurse and is the same as above.

## HOW CAN I HELP?

Before the exam, follow dietary instructions carefully. Inform the Radiologist of past colon history or surgery. Several times during the exam, you will be asked to remain perfectly still while holding your breath. The radiologist or technologist will instruct you to hold your breath at the proper times.

For most x-rays, a hospital gown will be provided. Please remove buttons, snaps, etc.

The radiologist will study your examination and report the results to your physician.

Let your doctor know of suspected pregnancy before proceeding with the exam.